

Health Care in Rural Communities: Finding Ways to Meet the Need



Operation Save Rural Alabama
Dale E. Quinney, Founder

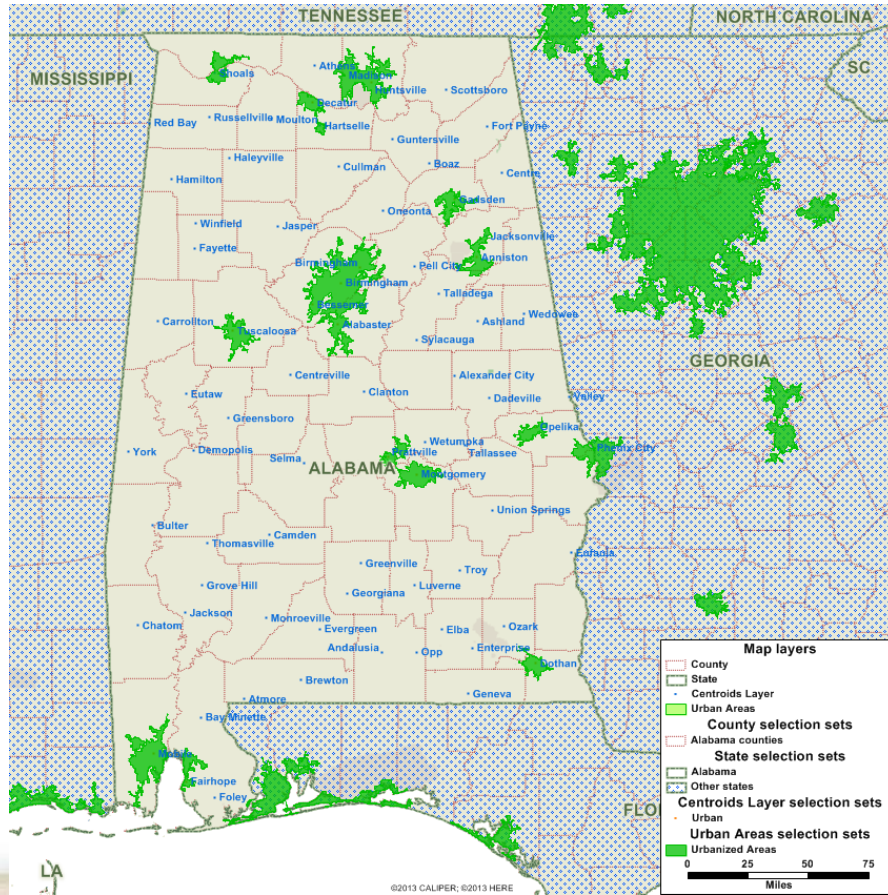
www.osral.net

334-546-3502

2018 Chronic Disease Institute:
Working Toward Wellness and Wholeness
April 4, 2018

RURAL AREAS ARE IMPORTANT TO EVERYONE!!!!!!

Products produced in rural areas or produced from materials and resources that come from our rural areas are of **critical** importance to the survival of **EVERYONE** and produce economic impacts for everyone.



Green is URBAN
Yellow is RURAL

Areas classified as “URBANIZED AREAS” by the Census Bureau in the most recent decennial census are URBAN. All other areas are RURAL.

**ALABAMA'S LONG-TERM HEALTH CARE
SOLUTION!!!!!!**

A BETTER EDUCATED POPULATION

2018 Chronic Disease Institute:
Working Toward Wellness and Wholeness
April 4, 2018

RURAL ALABAMA COUNTIES Are Stifled By a Chronic Lack Of Healthy Population Growth

24 of our 54 **RURAL** counties actually lost population between 1910 and 2010 with Bullock, Greene, Lowndes, Perry, and Wilcox Counties having approximately 1/3 of the population in 2010 that they had in 1910.

39 of our 54 **RURAL** counties and **2** of our 13 **URBAN** counties are projected to lose population between 2010 and 2040.

2016 AGE-ADJUSTED MORTALITY RATES!

(Rates are per 100,000 Standard Population) SOURCE: CDC WONDER

CAUSE OF DEATH	U.S.	ALABAMA (RANK)	RURAL ALABAMA		URBAN ALABAMA	
			RATE	CHANGE SINCE 2000	RATE	CHANGE SINCE 2000
All Causes	728.8	920.4 (4)	980.9	- 4%	878.5	-12%
Septicemia	10.7	17.7 (3)	18.6	+12%	17.0	No Change
Cancer	155.8	174.0 (7)	183.1	-15%	167.6	-22%
Diabetes	21.0	20.1 (30)	22.2	-15%	18.7	-41%
Heart Diseases	165.5	222.5 (4)	248.7	-24%	204.5	-27%
Stroke	37.3	51.6 (1)	53.9	-25%	49.9	-30%
Chronic Lower Respiratory Diseases	40.6	56.2 (7)	66.4	+50%	49.0	+4%
Kidney Diseases	13.1	17.4 (9)	18.6	-14%	16.5	-19%

2018 Chronic Disease Institute:
Working Toward Wellness and Wholeness
April 4, 2018

OUR HEALTH CARE INDUSTRY IS STYMIED BY UNCERTAINTY

Will the Affordable Care Act be Repealed and Replaced?

Will there simply be attempts to correct weaknesses in the ACA?

What will rural hospitals look like after health care reform?

What will be the role of public health in the future?

What will be the role of Federally Qualified Health Clinics in the future?

What will be the role of Rural Health Clinics in the future?

What will be the roles of other health care system components in the future?

What will happen to Medicaid?

What is the future of Medicare?

WHAT IS RURAL ALABAMA'S MOST IMPORTANT HEALTH CARE ISSUE?

ACCESS TO HEALTH CARE

- 1. Health care must be locally available – providers and facilities**
- 2. Must be able to get to the local health care**
- 3. Must be able to pay for the local health care**
- 4. Must understand what care is needed and how to receive the care (health care literacy)**

HOW DO WE MEET THE HEALTHCARE NEEDS IN RURAL ALABAMA?

Promote Prevention:

- Improve reimbursement for prevention**
- Encourage behavioral changes**
- Genomic testing**
- Get churches more involved in community health**

Expand Access to Care:

- Help rural students to be more competitive for admission to health professions training programs**
- Assure that programs providing student debt relief are requiring work obligations in areas of greatest need**
- Expand the scope of practice for Nurse Practitioners**
- Expand the use of Tele-health and Tele-medicine**
- Redefine “hospitals” and get 24-hour health care available in all counties**
- Establish County Health Coalitions in all rural counties**
- Define the scope of practice for Community Paramedics and expand this program**
- Provide local training for Community Health Navigators**