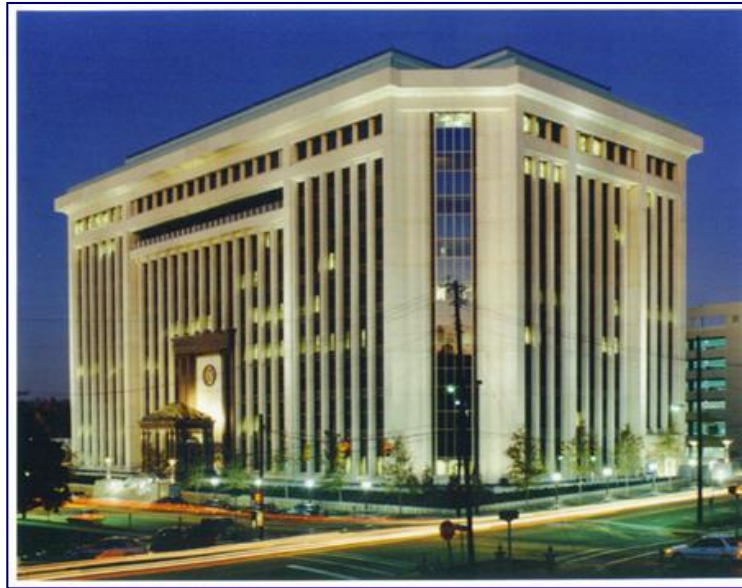


Alabama Department of Mental Health

JESSICA HALES

COORDINATOR OF ADULT MI SERVICES

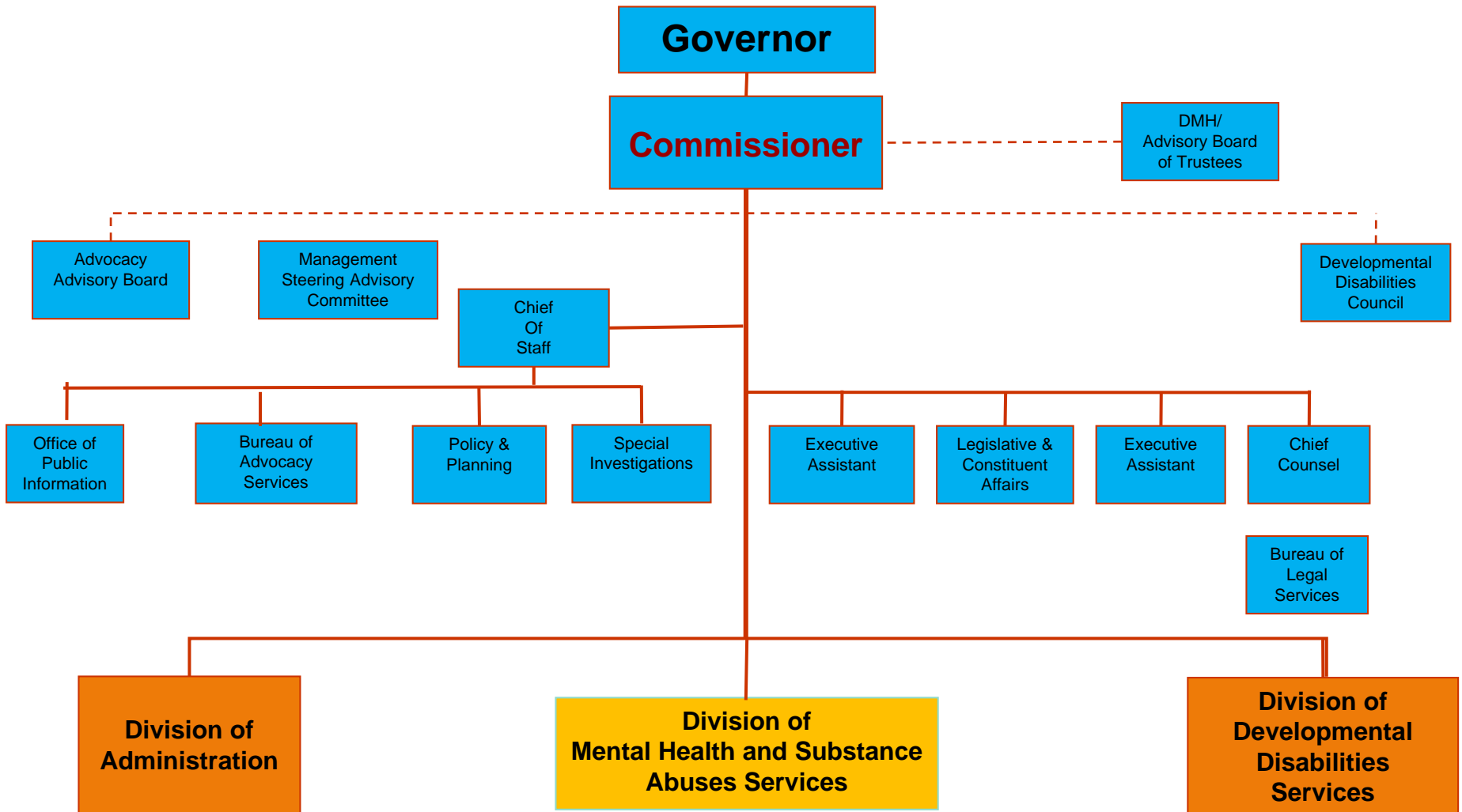
The Alabama Department of Mental Health



The Alabama Department of Mental Health (DMH) was created under Act 881 of the 1965 legislature and was charged with the responsibility of establishing a public mental health system. **The Department is responsible for mental illness, intellectual disability, and substance abuse services.** The Department is responsible for operating state psychiatric facilities, establishing standards for community services, and is empowered to contract for services.

Organizational Chart

Department of Mental Health



ROLE OF DEPARTMENT OF MENTAL HEALTH

***DMH State
Hospitals***

***Funding
(Contracting)***

***DMH
Administrative
Certification***

***Division
Specific
Standards/
Administrative
Code***

Advocacy

Division of Mental Illness

***Our
Purpose***

To establish an organized and comprehensive community based system of care for Adults and Children.

Division of Mental Illness

Our Target Population

Persons who must rely upon public mental health services and who meet Serious Mental Illness (SMI) or Serious Emotionally Disturbed (SED) criteria.

MH System of Care Inpatient Services

State Facilities

Montgomery - Greil closed August 31, 2012

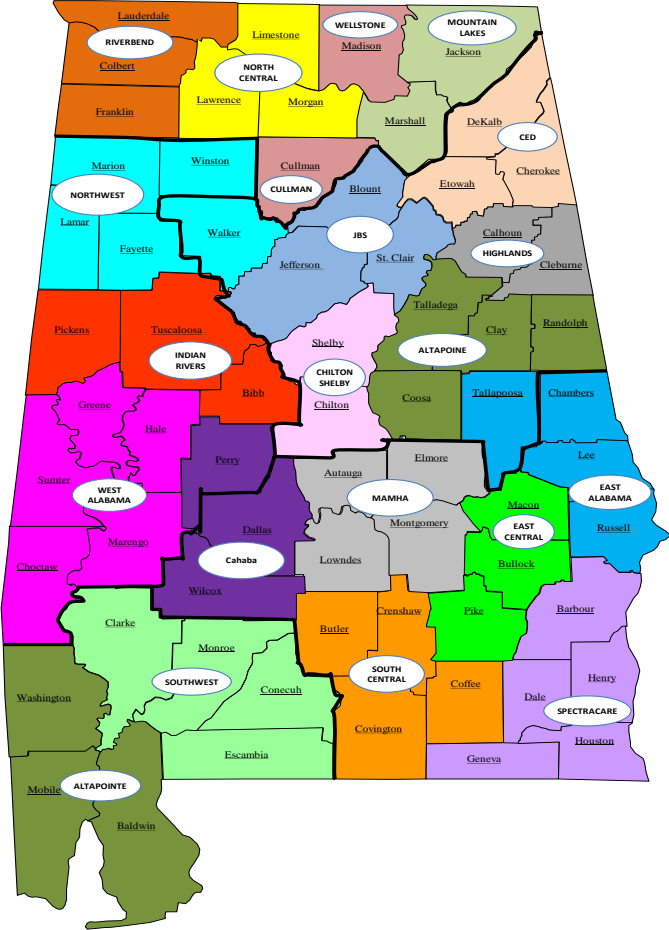
Mt. Vernon – Searcy closed October 31, 2012

Decatur - North AL Regional Hospital closed April 1, 2015

- Serve less than 1000 individuals per year.
 - **Tuscaloosa**
 - Bryce Hospital (268 beds)
 - Mary Starke Harper Geriatric Psychiatry Center (96 beds)
 - Taylor Hardin Secure Medical Facility (115 beds)
 - **Opelika**
 - DMH Unit at EAMC (adolescents only) (9 beds)



MH System of Care - Community Mental Health



Community Mental Health Center Service Requirements

Every CMHC must provide the following services:

Emergency Services (*crisis & after hours*)

Outpatient Services (*includes Case Management*)

Consultation and Education Services, and

**Partial Hospitalization/Intensive Day Treatment/
Rehabilitative Day Program**

Residential Services (*directly or through contract with other certified providers*)

Specialty Services such as ACT and In-Home are elective

Outpatient Services

Intake/Evaluation

Diagnostic Testing

Individual Counseling or Psychotherapy

Group Counseling or Psychotherapy

Family Counseling or Psychotherapy

Crisis Intervention and Resolution

Pre-Hospitalization Screening/Court Screening

Physician/Medical Assessment and Treatment (to include telemedicine)

Medication Administration

Medication Monitoring (Non-Physician)

Mental Illness Basic Living Skills

Family Support Education

Treatment Plan Review

Mental Health Consultation

Outreach Services

Case Management (adults and kids)

Child and Adolescent In-Home Intervention

Adult In-Home Intervention

Assertive Community Treatment (ACT) (adults only)

Program for Assertive Community Treatment (PACT) (adults only)

Day Programs

Partial Hospitalization Program (adults only)

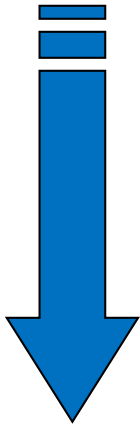
Adult Intensive Day Treatment

Adult Rehabilitative Day Program

Child and Adolescent Mental Illness Day Treatment

Adult MI Residential Services

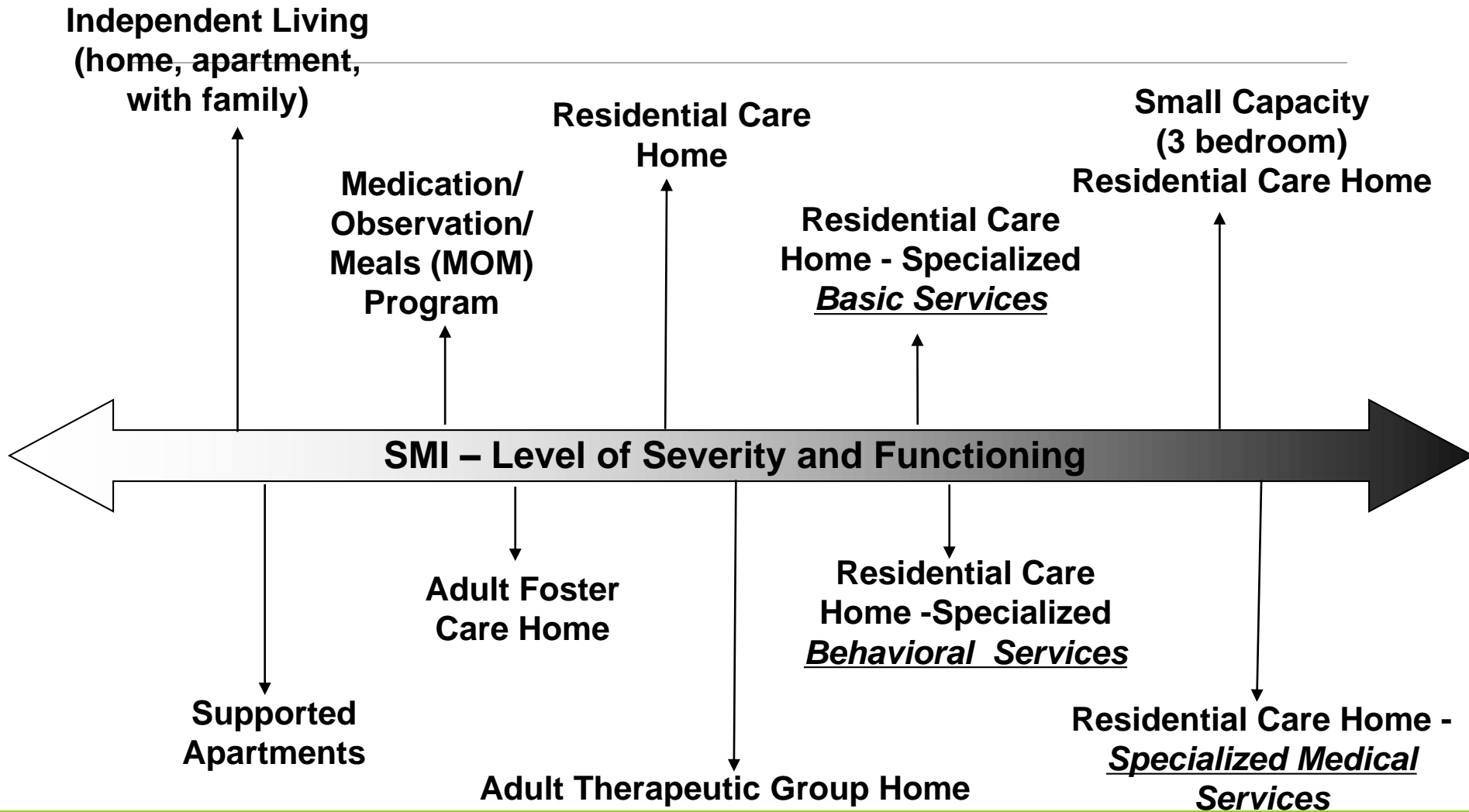
Congregate



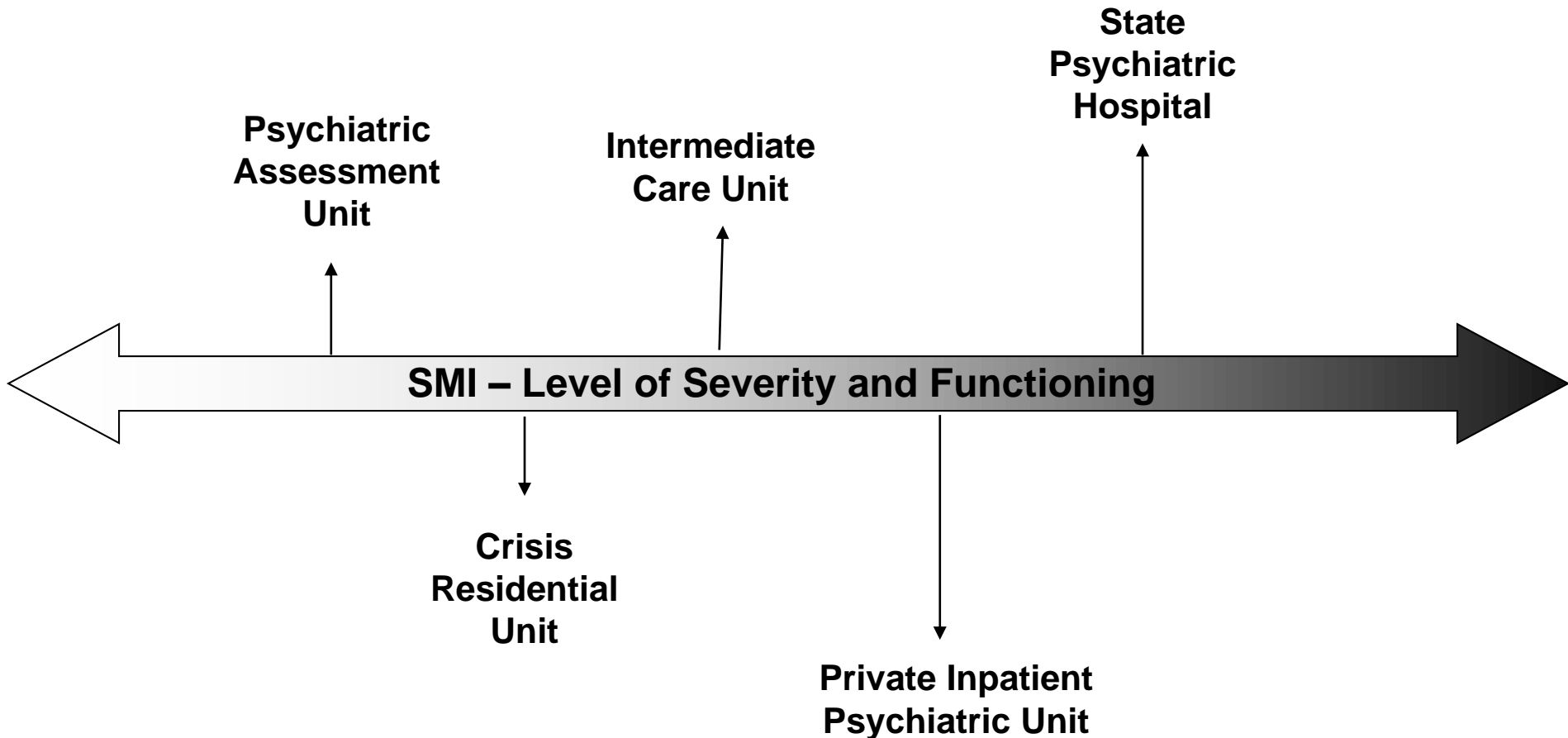
Integrated

- Adult Foster Care Home
- Residential Care Home
- Residential Care Home w/Specialized Basic Services
- Residential Care Home w/Specialized Behavioral Services
- Residential Care Home w/Specialized Medical Services
- Adult Therapeutic Group Home
- Small Capacity (3 bedroom) Residential Care Home
- Medication/Observation/Meals (MOM) Program
- Supported Apartments

Residential Levels of Care



Stabilization Services



Consumer's Voice - Recovery

“While consumers have many different goals for recovery the two most recognized goals are having a home to call their own and a meaningful, stable job.”

Consumer Driven Recovery Focused Mental Health System: A Consumer Perspective, The Alabama Directions Council, 2007, p 5.

National and State Drivers

- Wyatt
- Olmstead
- SAMHSA
- Consumer's Voice



Recovery Support Services

- Certified Peer Support Specialist
- Drop-in Centers
- Specialized Mobile Teams (Homeless Outreach)
- Supported Employment
- SOAR; Benefits Specialists
- Initiatives to support community integration

Target Population – Eligibility Adult MI Services

Adults who must rely upon public mental health services and who meet the following criteria.

Serious Mental Illness

❖ **Axis I Diagnosis** of Schizophrenia or Other Psychotic Disorders, Major Mood Disorders, and Severe Anxiety Disorders

and

❖ **Disability criteria**, at least 2 as a result of diagnosis:

- ✓ Unemployed, employed in a sheltered setting, or has markedly limited skills, poor work history
 - ✓ Shows severe inability to establish or maintain personal social support systems
 - ✓ Shows deficits in basic living skills
 - ✓ Exhibits inappropriate social behavior

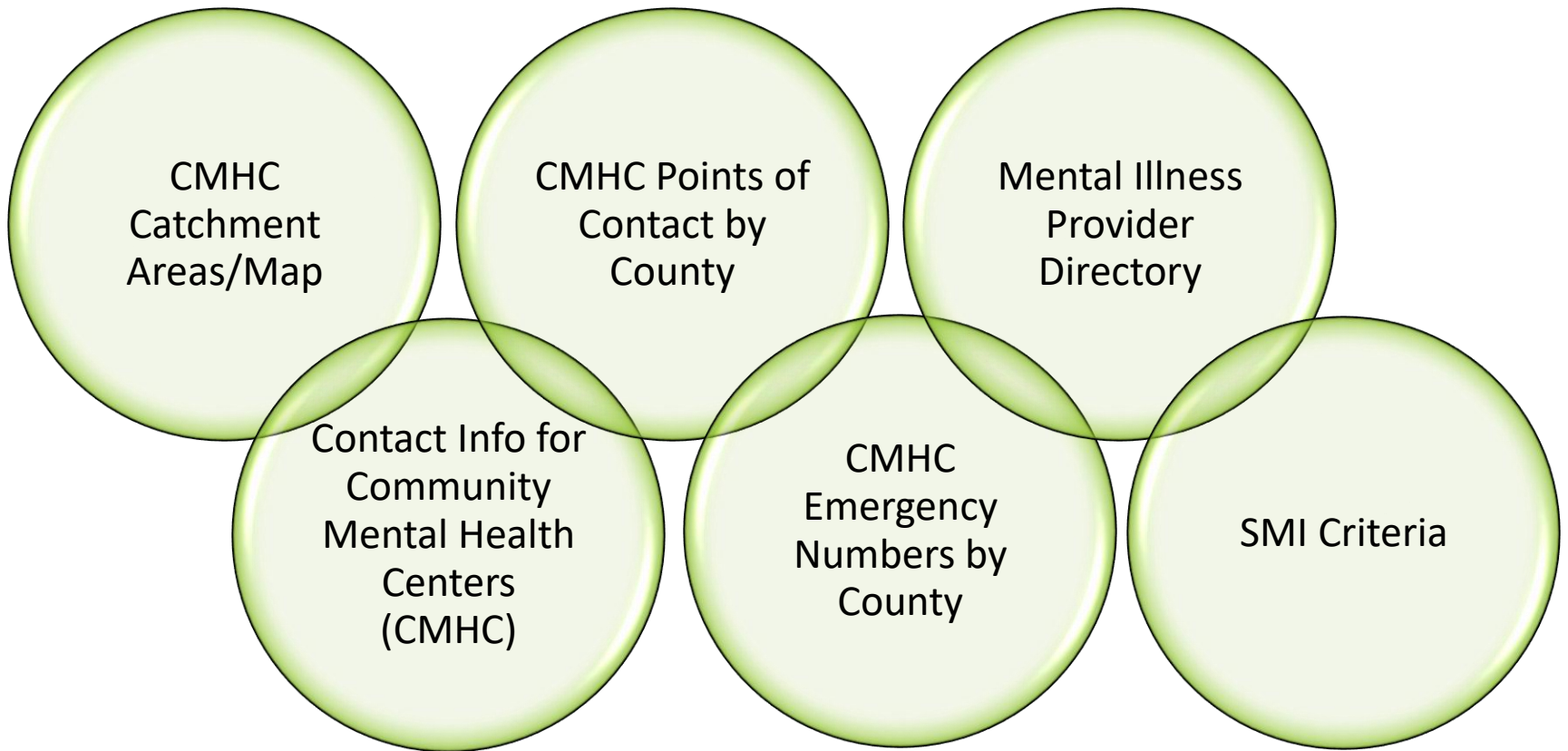
OR

❖ **High Risk**, at least 1:

- ✓ Hx of DMH supported inpatient or public residential tx as a result of Axis 1 dx (above)
- ✓ Without outpatient intervention, at imminent risk of needing inpatient hospitalization

An individual regardless of diagnosis shall be eligible for one intake per year and pre-hospital screening and crisis intervention as needed.

Access to Community Services



Points of Contact




THERE IS HOPE!

*Through community service providers,
the Alabama Department
of Mental Health
offers help and assistance*

POINTS OF CONTACT

COUNTY	MENTAL ILLNESS SERVICES	INTELLECTUAL DISABILITY SERVICES	SUBSTANCE USE DISORDER SERVICES
AUTAUGA	334-365-2207	334-285-2608	334-365-2207
BALDWIN	251-928-2871	251-947-5608	251-928-2871
BARBOUR	334-687-2323	334-687-9889	334-673-2143
BIBB	205-926-4681	205-333-1577	205-926-4681
BLOUNT	205-595-4555	205-625-3201	205-595-4555
BULLOCK	334-738-5279	334-738-5279	334-738-5279
BUTLER	1-877-530-0002	1-877-530-0002	1-877-530-0002
CALHOUN	256-236-3403	256-236-3403	256-236-3403
CHAMBERS	1-800-815-0630	1-800-815-0630	1-800-815-0630
CHEROKEE	256-927-3601	256-547-4407	256-927-3601
CHILTON	205-755-5933	205-668-1327	205-755-5985
CHOCTAW	1-800-239-2901	1-800-239-2901	1-800-239-2901
CLARKE	251-275-4165	251-947-5608	251-275-4165
CLAY	256-396-2150	256-396-2150	256-396-2150
CLEBURNE	256-463-2969	256-463-2969	256-463-2969
COFFEE	1-877-530-0002	1-877-530-0002	1-877-530-0002
COLBERT	256-764-3431	256-768-0901	256-764-3431

Mental Illness Provider Directory



Alabama
ADMH
Department of Mental Health
lifting life's possibilities

**MENTAL ILLNESS
PROVIDER DIRECTORY**

RSA Union Building
100 North Union Street
P.O. Box 301410
Montgomery, Alabama 36130-1410

Phone
(334) 242-3642
Fax
(334) 242-3025
Helpline
1-800-367-0955
Visit us at
www.mh.alabama.gov

*State-Funded providers are shaded in gray

5/3/2016

AIDS ALABAMA
Executive Director: Elaine Cottle, LCSW
3521 7th Avenue South
Birmingham, AL 35222
Telephone: (205) 324-5822
Fax: (205) 324-9311

www.aidsalabama.org

Services Offered:
Specialized Intensive Residential Care
Rehabilitative Day
Program for ADULTS ONLY

ALABAMA CLINICAL SCHOOLS
Executive Director: Jennifer Snyder
1221 Alton Drive
Birmingham, AL 35210
Telephone: (205) 336-9923
Fax: (205) 636-6483

www.alabamaticlinicalschoools.com

Services Offered:
Specialized Residential Treatment
(Adolescents only, ages 9 - 18)

DMH certifies only the residential component of services provided at Alabama Clinical Schools

***ALTAPOINTE HEALTH SYSTEMS (GREATER MOBILE MENTAL HEALTH CENTER)**

Executive Director: J. Tuerk Schlessinger
8750-A Southland Drive
Mobile, Alabama 36693
Telephone: (251) 473-4423
Toll Free: 800-336-2044
Fax: (251) 450-2213

www.alapoints.org
Main Office

COUNTIES SERVED: Mobile, Baldwin & Washington

Services Offered:

Adult Case Management
Adult Crisis Stabilization Unit
Adult In-home Intervention
Adult Intensive Day Treatment
Adult Outpatient
Assertive Community Treatment
Child & Adolescent Case Management
Child & Adolescent Day Treatment
Child & Adolescent In-home Intervention
Child & Adolescent Outpatient

Consultation and Education
Emergency Services
Forensic Case Management
Geriatric Adult Outpatient
General Adult Case Management
Inpatient Drug Program
Partial Hospitalization Program
Rehabilitative Day Program
Residential Services

Satellite Offices:
Washington County: (251) 847-2301
Baldwin County: (251) 450-2211

***BIBB/PICKENS/TUSCALOOSA MENTAL HEALTH CTR (INDIAN RIVER MHC)**

Executive Director: J. Randall Phillips
3209 9th Street
Tuscaloosa, Alabama 35401
Telephone: (205) 991-2131
Toll Free: 800-264-1660
Fax: (205) 656-1663

www.imhc.org
Main Office

COUNTIES SERVED: Bibb, Pickens, Tuscaloosa

Services Offered:

Adult Case Management
Adult In-home Intervention
Adult Outpatient
Assertive Community Treatment
Child/Adolescent Case Management
Child/Adolescent Day Treatment
Child/Adolescent In-home Intervention
Child/Adolescent Outpatient

Consultation & Education
Crisis Stabilization Unit
Crisis/Outpatient Commitments
Emergency Services
Inpatient Drug Program
Rehabilitative Day Program
Residential Services

SATELLITE OFFICES:
Bibb County: (205) 825-4841
Pickens County: (205) 901-8165

Community Mental Health Providers

310 Board Community Mental Health Centers

<p>Altapointe Health Systems 5750 A Southland Drive Mobile, AL 36617 (251) 450-5901 Fax: (251) 666-7537 Executive Director: Tuerk Schlesinger Counties Served: Clay, Coosa, Randolph, Talladega, Baldwin, Mobile, Washington, Email: (Region B &E)</p>	<p>Brewer Porch Children Center (SUB-CONTRACTOR THROUGH INDIAN RIVERS) PO Box 870156 Tuscaloosa, AL 35405 (205) 348-7236 Fax: (205) 348-9368 Executive Director: Rick Gray Ph.D. Counties Served: Tuscaloosa Email: rick.h.gray@ua.edu (Region B)</p>
<p>Cahaba Mental Health Center 417 Medical Center Parkway Selma, AL 36701 (334) 875-2100 Fax: (334) 418-6540 Executive Director: Lafon Barlow Counties Served: Dallas, Perry, and Wilcox Email: lafonb@bellsouth.net (Region C&D)</p>	<p>Cherokee, Etowah, DeKalb Mental Health Center 425 5th Avenue NW Attalla, AL 35954 (256) 492-7800 Fax: (256) 494-5536 Executive Director: Shelia Hurley Counties Served: Cherokee, Etowah, and DeKalb Email: shurlev@cedmhc.org (Region B)</p>

CMHC Emergency Numbers

Community Mental Health Center Emergency Numbers by County

<i>County</i>	<i>Name of Operating Agency</i>	<i>Business Hours Telephone Number</i>	<i>After Hours Telephone Number C= collect, TF = toll free, L = Local</i>
Autauga	Montgomery Area	(334) 365-2207	TF 877-279-7830
Baldwin	AltaPointe	(251) 990-4190	TF 800-558-8295
Barbour	Spectracare	(334) 687-2323	TF 800-951-4357
Bibb	Indian Rivers	(205) 926-4681	TF 800-264-1660
Blount	Eastside	(205) 625-3882	C 205-836-7283
Bullock	East Central	(334) 738-5279	TF 800-467-1208
Butler	South Central	(334) 382-2018	TF 1-877-530-0002
Calhoun	Calhoun-Cleburne	(256) 236-3403	L 256-236-3403
Chambers	East Alabama	(334) 756-4117	TF 800-815-0630
Cherokee	CED	(256) 927-3601	L, 256-927-3601
Chilton	Chilton-Shelby	(205) 755-5933 (205) 755-8803	L 205-755-5933
Choctaw	West Alabama	(205) 459-2612	TF 800-239-2901

SMI Definition/Eligibility for Adults

DEFINITION OF SERIOUS MENTAL ILLNESS/ DESCRIPTION OF CONTRACT ELIGIBLE CLIENTS (ADULTS)

CATEGORY A. Persons who meet the diagnosis and disability criteria for serious mental illness listed below in Section 1 or who meet the criteria for high risk listed below in Section 2.

Section 1: Persons who are Seriously Mentally Ill:

Diagnosis: Any diagnosis listed below in combination with at least two criteria from the disability category:

Schizophrenia and Other Psychotic Disorders:

295.xx	Schizophrenia
.30	Paranoid Type
.10	Disorganized Type
.20	Catatonic Type
.90	Undifferentiated Type
.50	Residual Type
295.40	Schizophreniform Disorder
295.70	Schizoaffective Disorder
297.1	Delusional Disorder
298.8	Brief Psychotic Disorder
297.3	Shared Psychotic Disorder
298.9	Psychotic Disorder NOS

Mood Disorders (Major):

296.xx	Major Depressive Disorder
.2x	Single Episode
.3x	Recurrent
296.xx	Bipolar I Disorder
.0x	Single Manic Episode
.40	Most Recent Episode Hypomanic
.4x	Most Recent Episode Manic
.6x	Most Recent Episode Mixed
5x	Most Recent Episode Depressed

Mental Health Services Directory

Visit our website at www.mh.alabama.gov

The screenshot displays a web browser window with the URL <http://www.mh.alabama.gov/UT/FindServices.aspx>. The page header includes the logo for "The Alabama Department of Mental Health" and a navigation menu with links for "Consumers", "Family", "Advocates", "Students", and "Careers". On the left side, there is a vertical social media bar with icons for Facebook, Twitter, email, and a plus sign. The main content area is titled "Find Services" and features a call to action: "Need Help? Call 1-800-367-0955 Click here to Find Services". Below this, there are several colored buttons: "Commissioner's Office" (purple), "Mental Illness" (blue), "Developmental Disabilities" (green), "Substance Abuse" (yellow), and "Administration" (pink). The text explains that the department offers help through community service providers and provides a referral line at 1-800-367-0955. Two PDF links are provided: "Find services by county PDF" and "Mental Illness Services Provider Directory PDF". On the right side, there is a "Site Contents A to Z" menu with a list of links including "Press", "Media Center", "Events Calendar", "Mental Health History", "Advocacy Services", "Nursing Home Screening (OBRA PASRR)", "Deaf Services", "Staff Development & Training", "Nurse Delegation Program", "Becoming a Community Provider", and "Contracts & Vendor Opportunities". The footer contains links for "About Us", "Contact Us", "FAQs", "Related Sites", "Statements/Policies", and "Español".



Contact Information

JESSICA HALES

334-242-3200

jessica.hales@mh.alabama.gov